

An aerial photograph of a coastal region, likely in New Zealand. The image shows a rugged, mountainous coastline with a large, irregularly shaped island or headland. The water is a deep blue, with a lighter turquoise area near the shore. A large, dark blue circle is overlaid on the left side of the image, containing the text "EARTH OBSERVATION LABORATORY AOTEAROA" in white, uppercase letters. The land area is a mix of green fields and brown patches, with a river or stream visible in the lower right.

EARTH OBSERVATION LABORATORY AOTEAROA

eolabaotearoa.co.nz

An aerial photograph of a coastal region, likely in New Zealand, showing a complex network of turquoise and light blue waterways (fjords and estuaries) winding through dark green, forested land. The water's color suggests shallow depths and sediment. The land is densely forested with some small clearings and buildings visible.

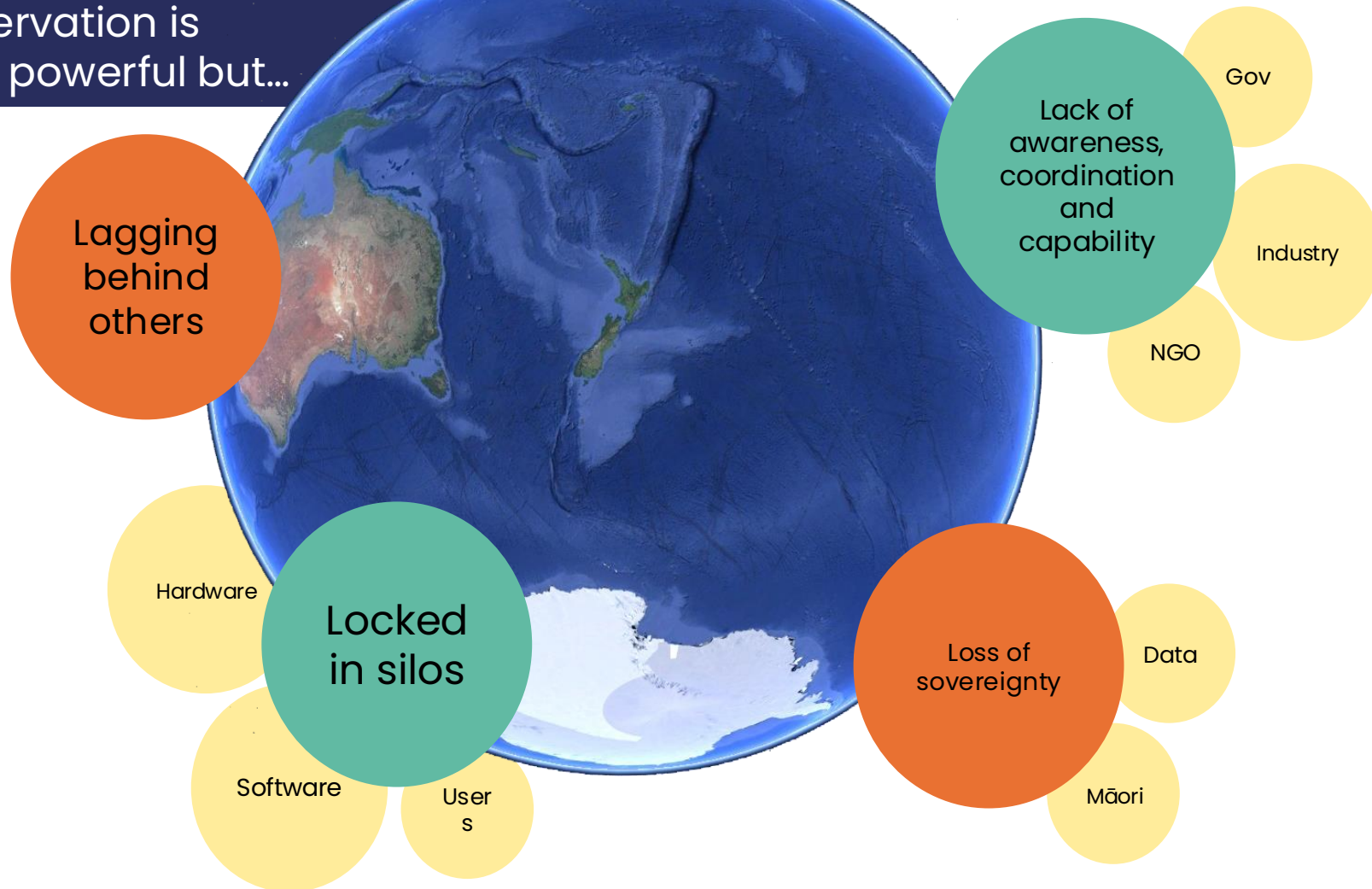
OUR VISION

**Aotearoa's nexus for
collaborative Earth Observation
and data-driven decisions.**

EARTH
OBSERVATION
LABORATORY
AOTEAROA

Why Earth Observation (EO) Lab?

Earth observation is
incredibly powerful but...



What are we doing?

- Professional-to-public community of interest.
 - Mailing list
 - Community events, online and in person
 - Community mobilisation for funding calls & challenges
- Capacity building.
 - GitHub for code tools sharing
 - Resource collation and training delivery
 - Data sharing enablement within organisations and the country as a whole
- Engagement with Māori perspective.
 - Empowering the use of data for own needs
 - A national register of tapu locations?



Future priorities



- Industry, governmental and NGO hubs
- NZ leadership in AI, space, and environmental – climate – resources, with regional partners
- Local to national government capacity building
- Long term, sustainable support
- Centre of doctoral training
- Māori leadership engagement

What now?

<https://eolabaotearoa.co.nz/>



- Encourage sign up > break those silos!
- Establish public sector co-ordination or enable us to provide that leadership.

See the World Through a New Lens — Subscribe for Updates.



#substack

EARTH
OBSERVATION
LABORATORY
AOTEAROA

Earth Observation Laboratory (EO Lab Aotearoa) is an open, cross-sector community working to advance the use of EO data for collective benefit. Currently supported by the University of Auckland through a two-year grant, we aim to establish a nationally connected community for Earth Observation, in partnership with Te Pūnaha Ātea | Space Institute, Ngā Ara Whetū | Centre for Climate, Biodiversity & Society, and the Centre for eResearch.

WHO WE ARE

The background of the slide features a silhouette of two large satellite dish antennas mounted on tall, dark, conical structures, likely representing mountain peaks. The sky is a vibrant mix of orange, pink, and purple, suggesting a sunset or sunrise. The overall mood is technological and aspirational.

EARTH
OBSERVATION
LABORATORY
AOTEAROA

EARTH
OBSERVATION
LABORATORY

